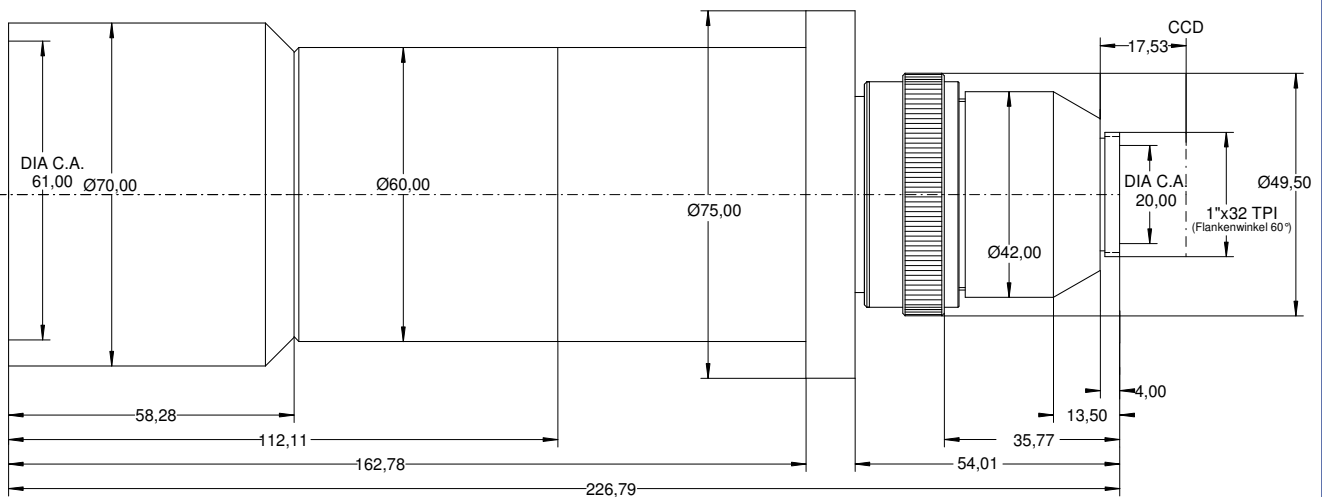
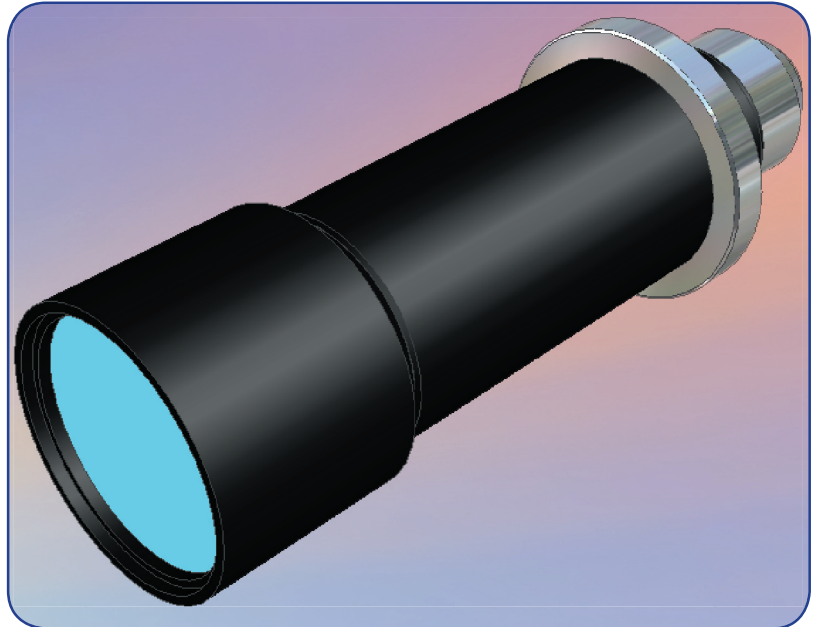


## DATA SHEET

### S5LPJ1252

**Correctal® T60/0.26**  
**telecentric lens**  
**with C-mount**

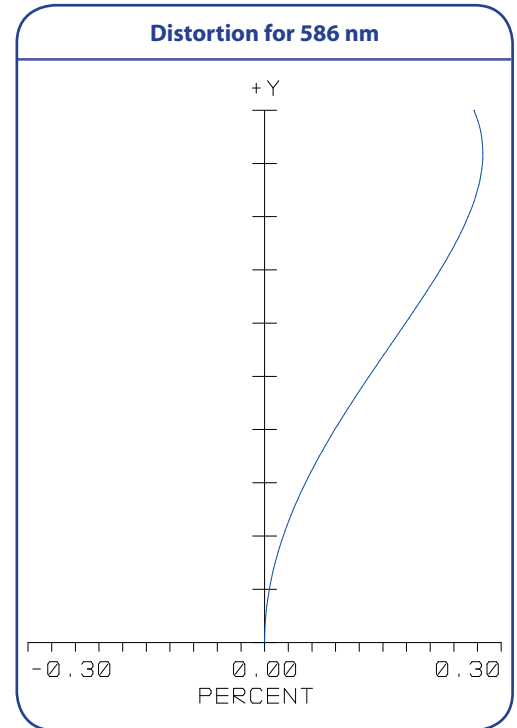


outline drawing

other adapters on special request

## S5LPJ1252 Correctal® T60/0.26 telecentric lens with C-mount

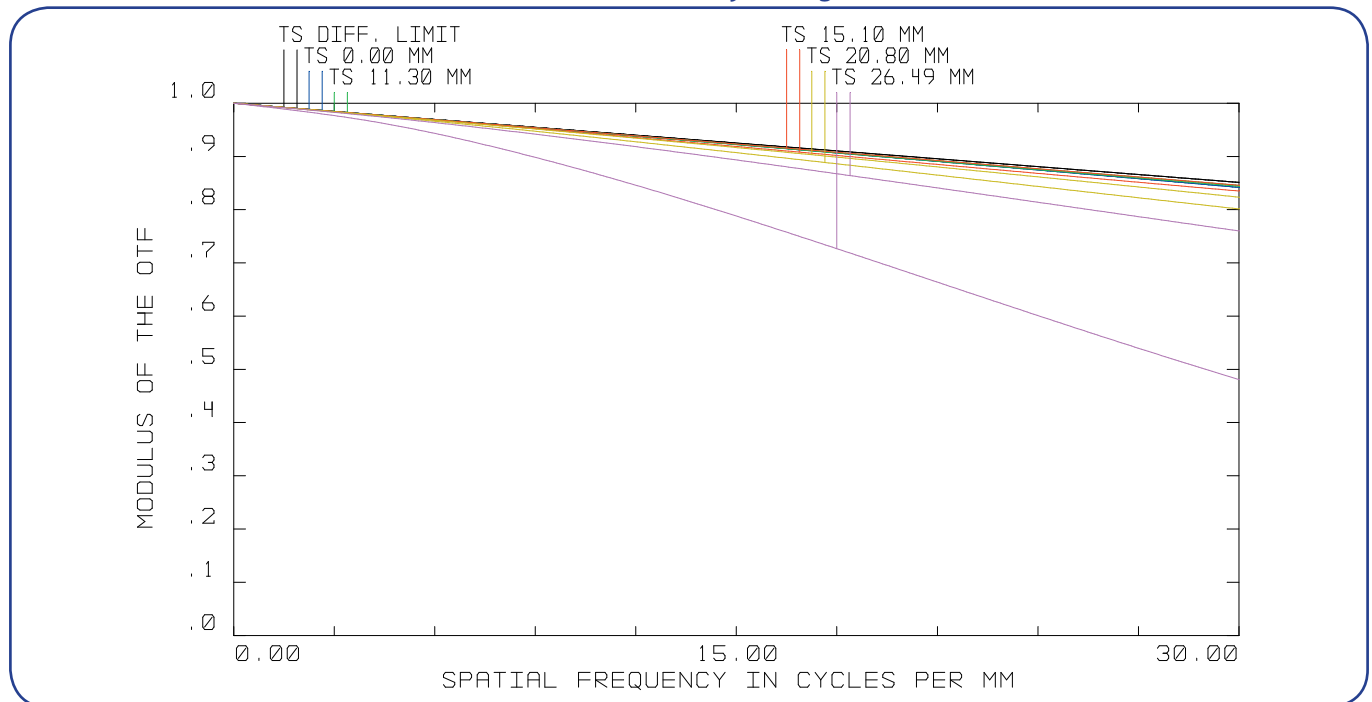
Specifications	
part number	S5LPJ1252
magnification (+/-5%)	0.264
working distance [mm] (+/-2%)	190
max. object size [mm] at a chip size of [mm] distorsion [%]	18.1 x 13.6 4.8 x 3.6 (1/3") 0.14
max. object size [mm] at a chip size of [mm] distorsion [%]	24.2 x 18.1 6.4 x 4.8 (1/2") 0.2
max. object size [mm] at a chip size of [mm] distorsion [%]	33.3 x 25.0 8.8 x 6.6 (2/3") 0.28
max. object size [mm] at a chip size of [mm] distorsion [%]	41.2 x 33.3 10.0 x 8.8 (1") 0.3
numerical aperture	0.02
max. outside-Ø [mm]	70/75
length [mm]	234
weight [kg]	



T..Tangential

### MTF for various object heights

S..Sagittal



also available with coaxial illumination (S5LPL1252) and coaxial LED-illumination (S5LPL1252/LED)