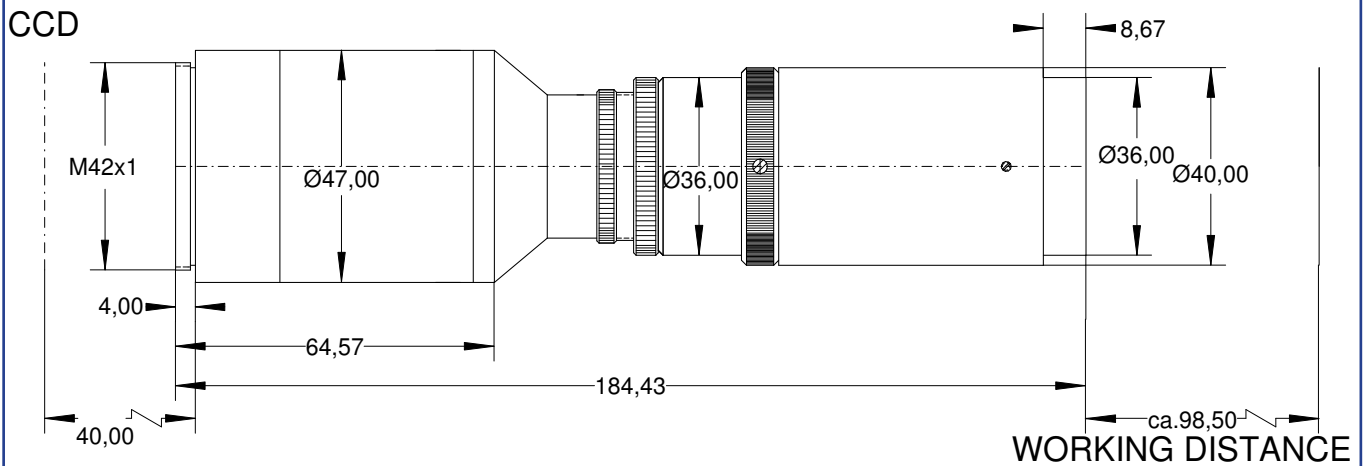
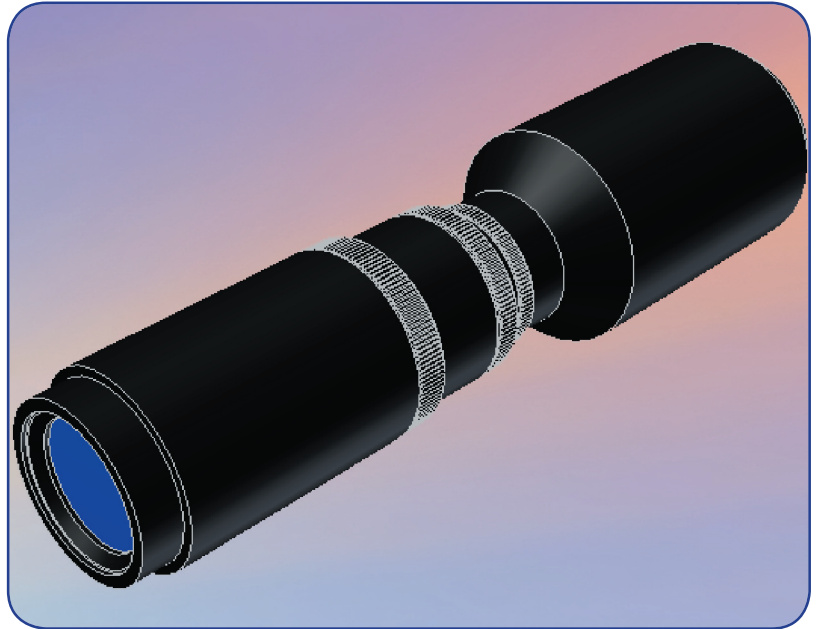


DATA SHEET

S5LPJ0421

Correctal® TL/3.0
telecentric lens
with M42-mount

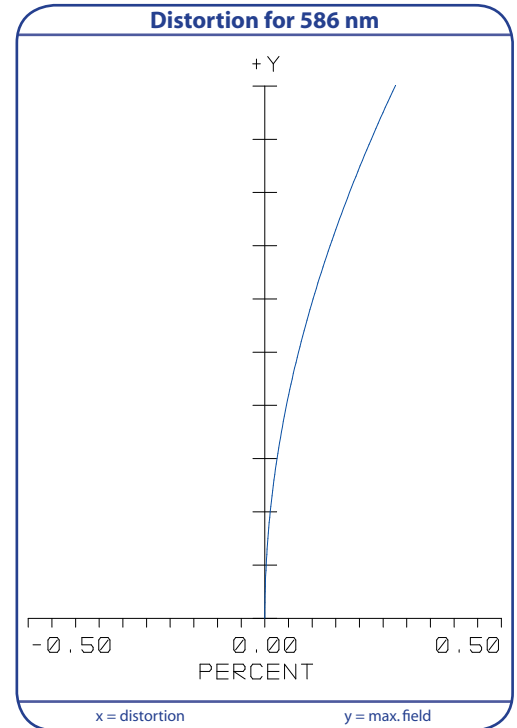


outline drawing

other adapters on special request

S5LPJ0421 Correctal® TL/3.0 telecentric lens with M42-mount

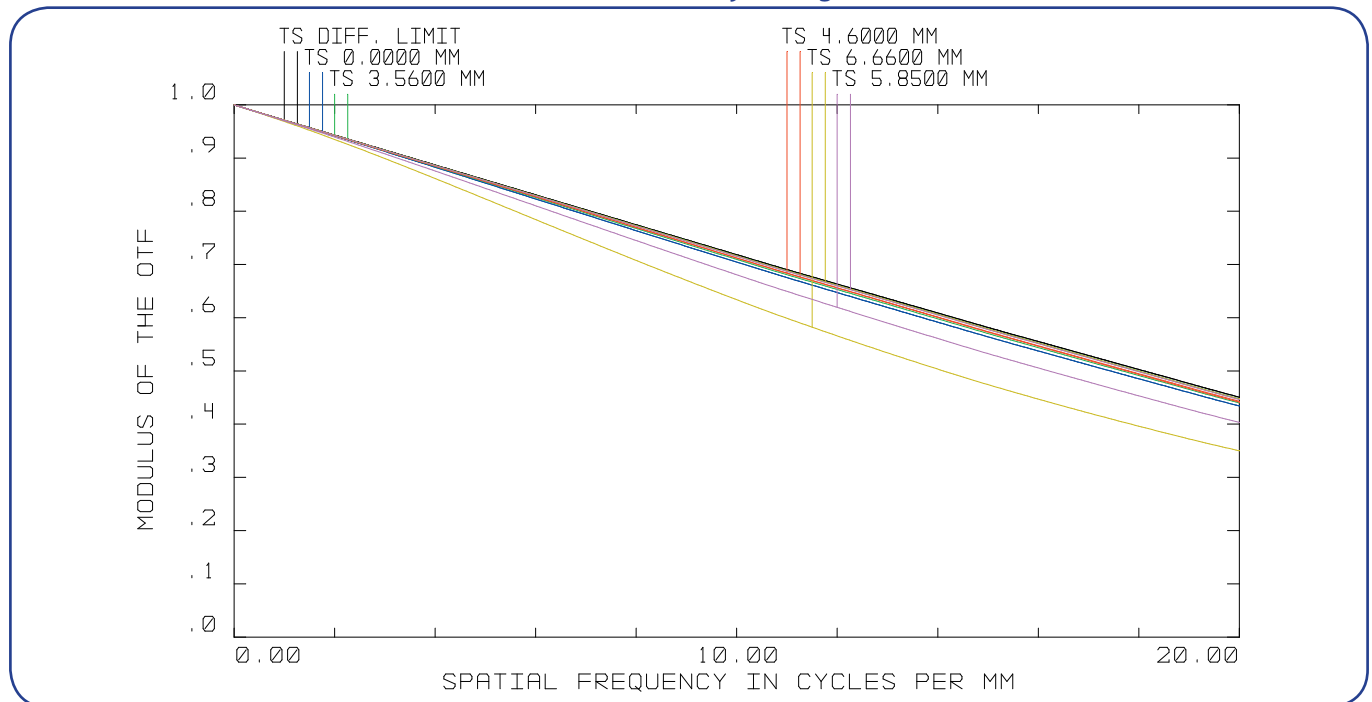
Specifications	
part number	S5LPJ0421
magnification (+/-5%)	3.0
working distance [mm] (+/-2%)	98.5
max. object size [mm] at a chip size of [mm]	5.0 x 5.0 15.15 x 15.15 (1.2")
distorsion [%]	0.1
max. object size [mm] at a chip size of [mm]	9.3 28
distorsion [%]	0.2
max. object size [mm] at a chip size of [mm]	11.7 35
distorsion [%]	0.3
max. object size [mm] at a chip size of [mm]	13.3 40 (with M52x1)
distorsion [%]	0.4
numerical aperture	0.04
max. outside-Ø [mm]	47.0
length [mm]	180.4
weight [kg]	0.4



T..Tangential

MTF for various object heights

S..Sagittal



also available with coaxial illumination (S5LPL0421) or coaxial LED-illumination (S5LPL0421/LED)

Sill Optics
GmbH Co. KG
Johann-Höllfritsch-Str. 13
DE-90530 Wendelstein

Copyright © Sill Optics GmbH & Co. KG 2007
All rights reserved.
Issue F
Published 13.08.2007.

Tel.: +49/9129/9023 - 0
Fax: +49/9129/9023-23
E-mail: info@silloptics.de
Internet: www.silloptics.de

All information contained in this data sheet is for information purposes only and is not binding. The content is subject to change at any time without notification, all information without guarantee. We reserve the right to make constructional changes in the course of product improvement.