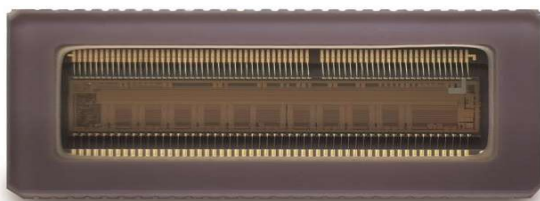


## 2K/4K C-mount Line Scan CMOS Image Sensor

*Preliminary and Confidential*



### Applications

- Industrial Inspection
- Logistics barcode scanning
- Printing Inspection
- Railway Inspection

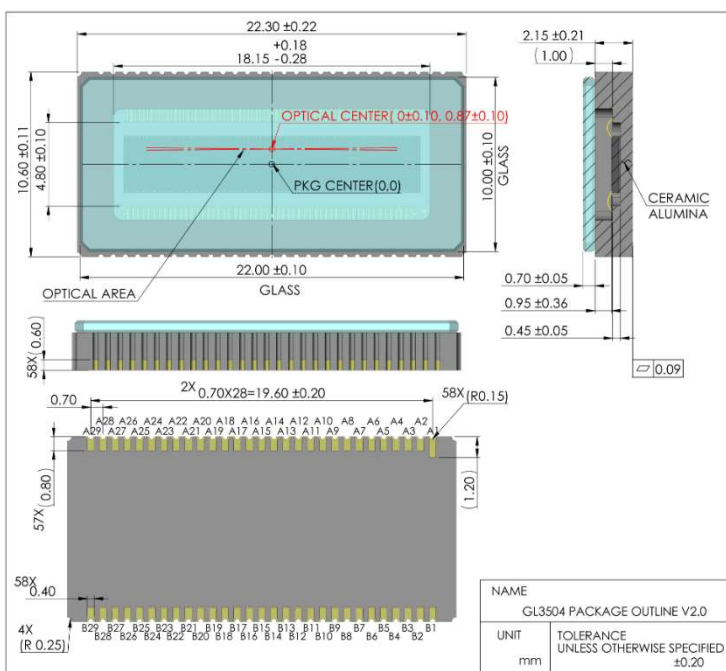
### SENSOR DESCRIPTION

GL3504 is a global shutter line scan image sensor consisting of two sets of pixel arrays, one is two lines with 3.5  $\mu\text{m}$  pixels, and the other is four lines with 7  $\mu\text{m}$  pixels. Multiple modes are supported including single/dual lines of 3.5  $\mu\text{m}$ , and single/ dual/four lines of 7  $\mu\text{m}$ . It reaches a maximum line rate of 172 kHz with 7  $\mu\text{m}$  line in 12 bit single line mode, or up to a maximum line rate of 84 kHz with 3.5  $\mu\text{m}$  line in 12bit single line mode.

GL3504 provides a cost-effective camera solution for inspection applications such as industrial and logistics barcode scanning. Color version sensor offered with Bayer CFA for the two 3.5  $\mu\text{m}$  pixel lines, RGBW true color CFA for the four 7  $\mu\text{m}$  pixel lines. Moreover, output channel multiplexing provides more flexibility for users.

GL3504 is assembled with a 58 pin CLCC ceramic package for fast heat dissipation and high robustness.

### PACKAGE OUTLINE



### SENSOR SPECIFICATIONS

Resolution	4096 (H) × 1(V)	4096 (H) × 2(V)	2048 (H) × 1(V)	2048 (H) × 2(V)	2048 (H) × 4(V)	2048 (H) × 4(V)
Pixel size	3.5 $\mu\text{m}$ × 3.5 $\mu\text{m}$	3.5 $\mu\text{m}$ × 3.5 $\mu\text{m}$	7 $\mu\text{m}$ × 7 $\mu\text{m}$	7 $\mu\text{m}$ × 7 $\mu\text{m}$	7 $\mu\text{m}$ × 7 $\mu\text{m}$	7 $\mu\text{m}$ × 7 $\mu\text{m}$
ADC	12 bit	12 bit	12 bit	12 bit	12 bit	8 bit
Full well capacity	12.5 ke-	12.5 ke-	11.5 ke-	10.0ke-	10.2ke-	10.0ke-
Temporal noise	5.5 e-	5.5 e-	5.5 e-	5.1e-	5.2e-	18.1e-
Dynamic range	67.5 dB	67.5 dB	66.5 dB	66dB	65.8dB	54.9dB
Max. frame rate	84 kHz	42 kHz	172 kHz	88.4kHz	44.7kHz	62.9kHz
Power consumption	< 0.9 W				<1.0W	<0.7W
Interface	Sub LVDS					
Max. Data rate	5.47 Gbps					
Channel multiplexing	6/3/2/1					
Package	58pin CLCC ceramic package					
Chroma	Mono & Color					

Subject to change without notice. Please address all product inquiries to GPIXEL

Email: [info@gpixel.com](mailto:info@gpixel.com)