

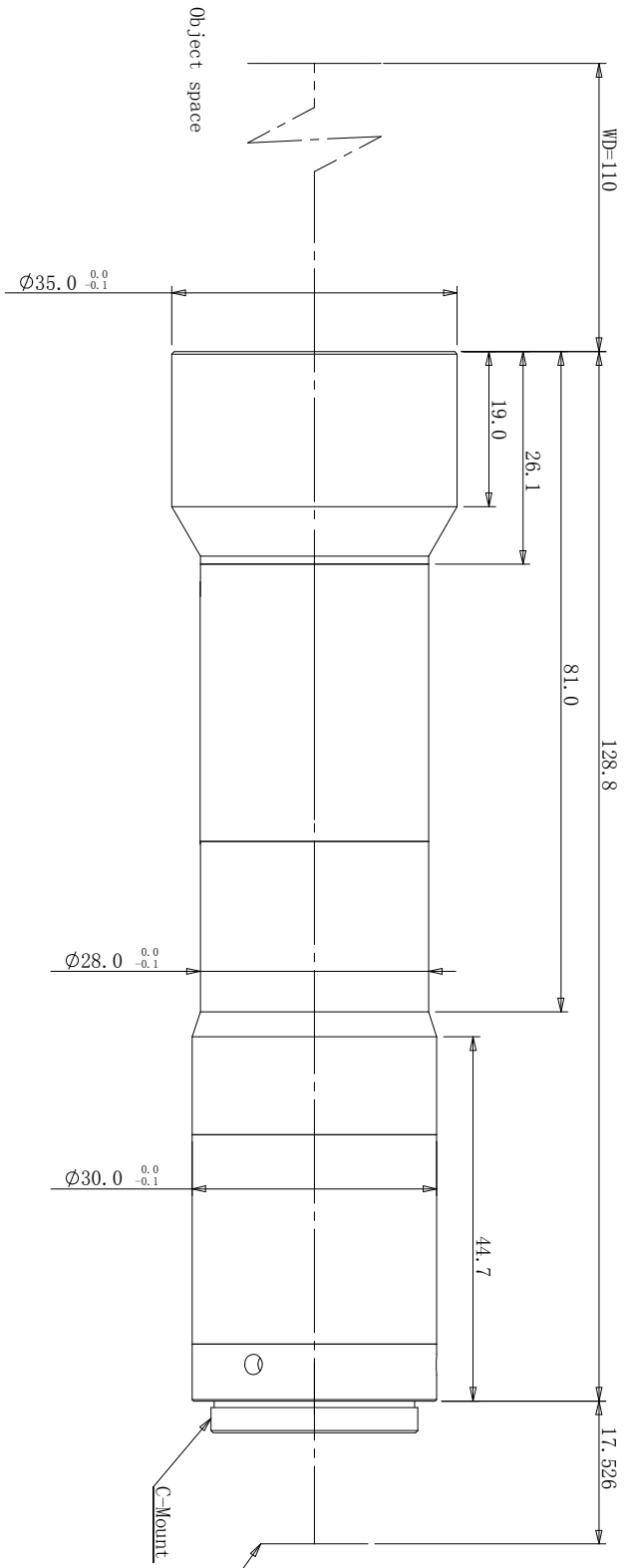
A

B

C

D

Optical Specifications	
Magnification (X)	1.5
Working Distance (mm)	110±2
Telecentricity(°)	<0.1
Distortion (%)	<0.1
Depth Of Field (mm)	0.37
MTF30 (lp/mm)	>78
Aperture	10
Object Space NA	0.0747
O/I Distance (mm)	239±2
Length (mm)	128.8
Sensor Size (φ mm)	18.0 (1.1")
Mount	C-Mount
Weight (kg)	-



View Angle	Remark	Item	Signature	Date
Standard Difference		Drawing		
		Design		
		Check		
		Approve		
		Paper Size		
		Revised Date		



广东奥普特科技股份有限公司

OPT-KS15-110-111

Copyright © 2011 by OPT
All Rights Reserved

Drawing Code: KPDD20171130K08017

TT14

Scale: 1:1

Page: 1/1 Total Page

Version: V1.0.1