

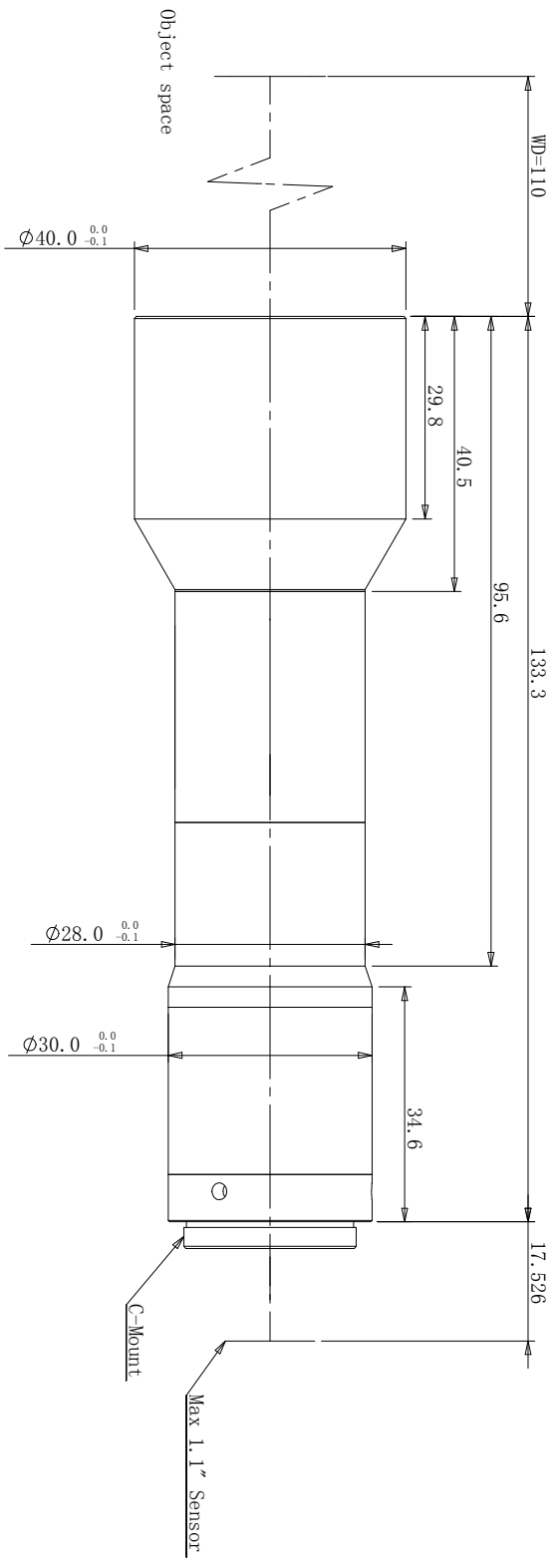
A

B

C

D

Optical Specifications	
Magnification (X)	1.0
Working Distance (mm)	110±2
Telecentricity(°)	<0.18
Distortion (%)	<0.13
Depth Of Field (mm)	0.58
MTF30 (lp/mm)	>105
Aperture	7
Object Space NA	0.0715
O/I Distance (mm)	243±2
Length (mm)	133.3
Sensor Size (φ mm)	18.0 (1.1")
Mount	C-Mount
Weight (kg)	-



View Angle	Remark
	Standard Difference
TT14	

Item	Signature	Date
Drawing		
Design		
Check		
Approve		
Paper Size	A4	
Revised Date	2017-11-30	



广东奥普特科技股份有限公司

OPT-KS10-110-111

Copyright © 2011 by OPT  
All Rights Reserved

Drawing Code KPPD20171130K08015

A

B

C

D