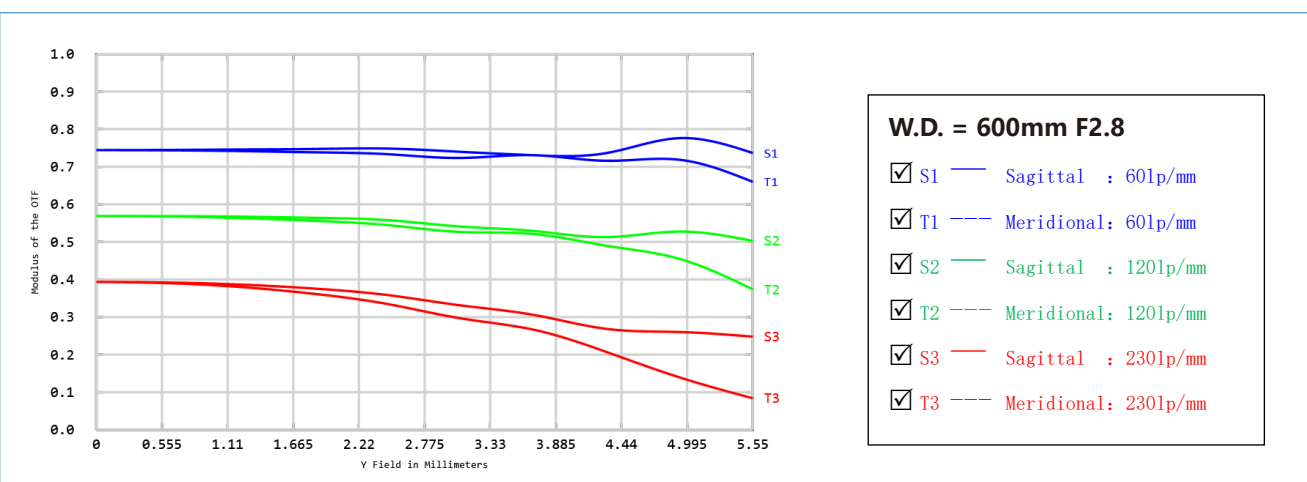
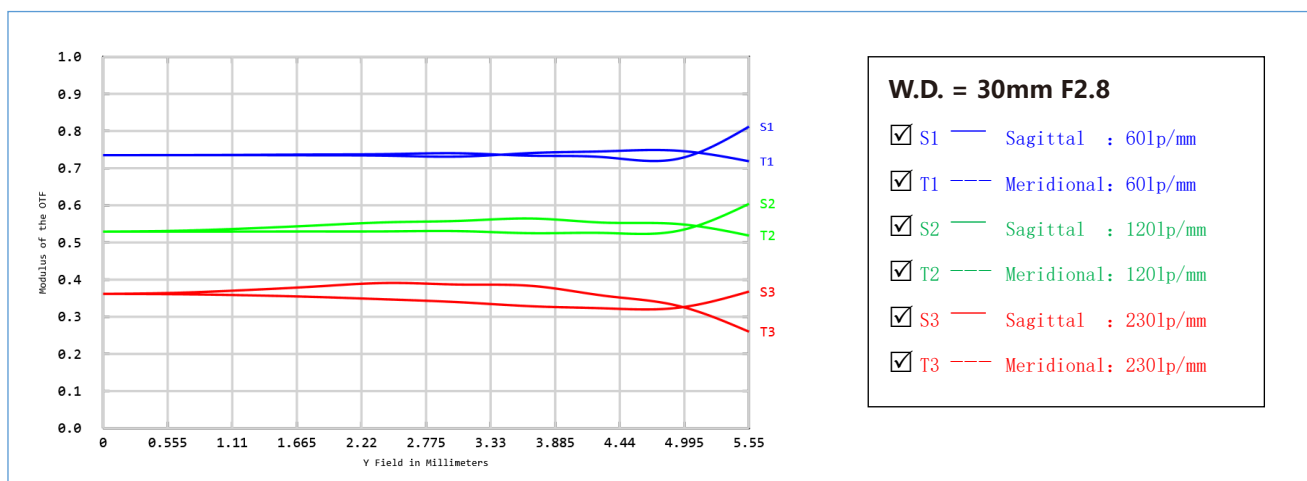
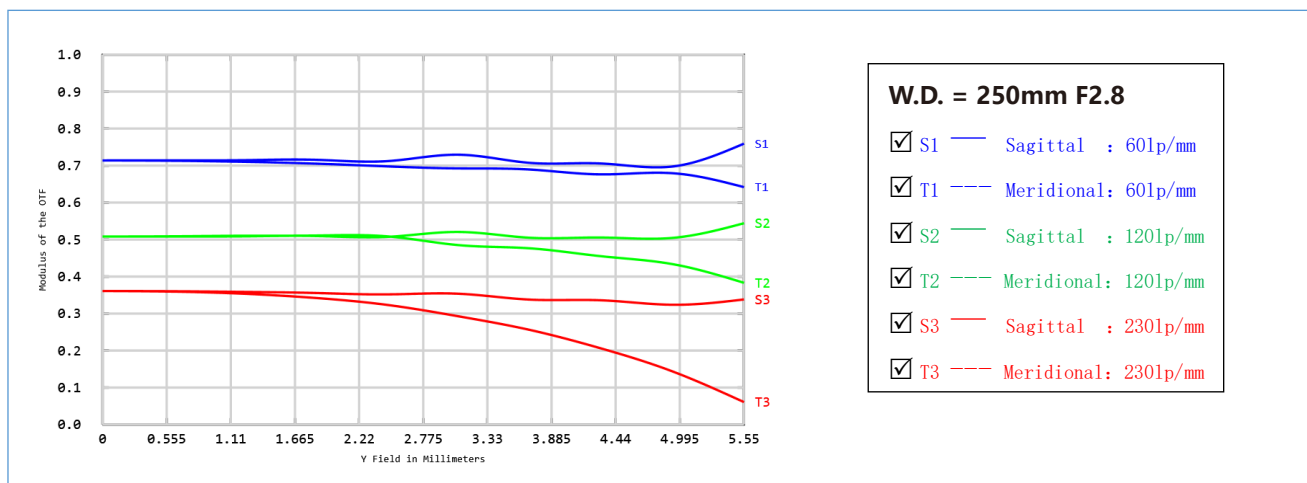


# Cobra Series Fixed Focal Length Lenses

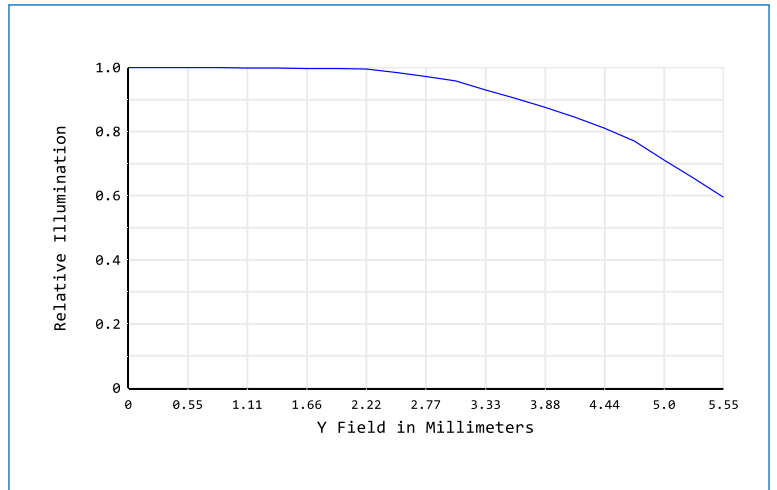
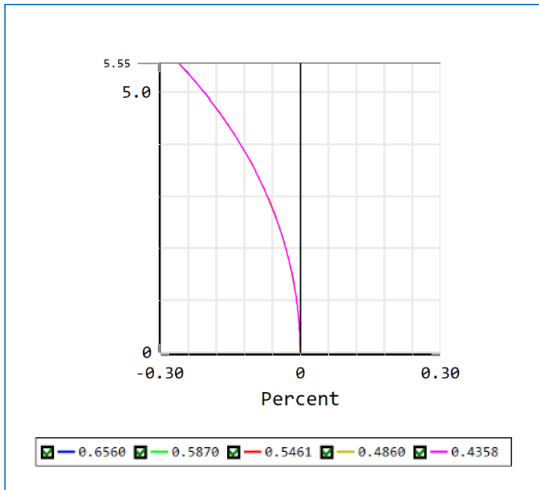
#OPT-COB3528 E.F.L.= 35mm F2.8

## •Modulation Transfer Function(MTF)



•Distortion(W.D.= 450mm)

•Vignetting(W.D.= 500mm F2.8)



Measured with respect to Image Plane, W.D.=  $\infty$

- Entrance Pupil Position (入瞳位置) : -28.07mm
- Exit Pupil Position (出瞳位置) : -102.98mm
- 1st Principal Point (第一主点) : -4.96mm
- 2nd Principal Point (第二主点) : -35.00mm