

Laser Application Fixed Focal Length Lenses



Product Features

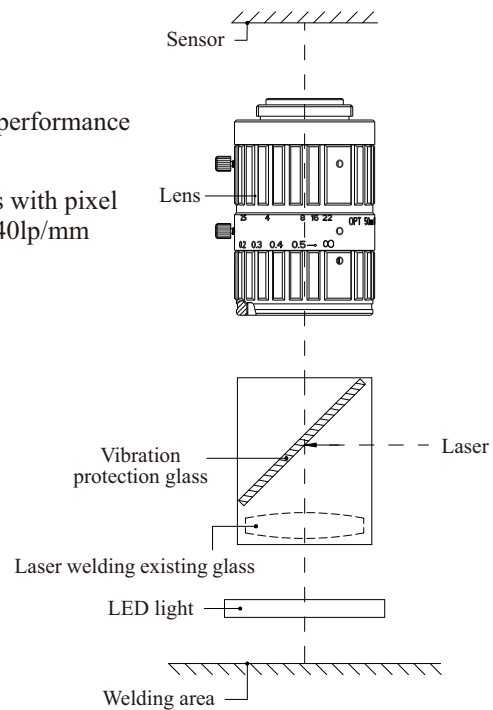
- 1** Extremely long working distance
Designed for laser applications, working distance over 800mm
- 2** Professional design and stable quality
Using high standard optical technology to realize perfect optical performance
- 3** High resolution
Compatible to most 5MP industrial cameras, suitable for cameras with pixel size $\geq 3.45\mu\text{m}$, max compatible to 2/3" sensor, resolution up to 140lp/mm
- 4** Low distortion
Total distortion $< 0.1\%$
- 5** High uniformity

Selection Guide

OPT-C5025-5M-LW

- Long working distance
- 5M pixel
- $F\# \geq 2.5$
- Focal length = 50mm
- C mount
- Brand name

Lens application structure



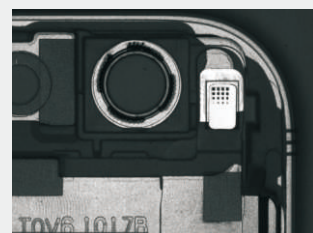
Application Examples



Soldering joint inspection

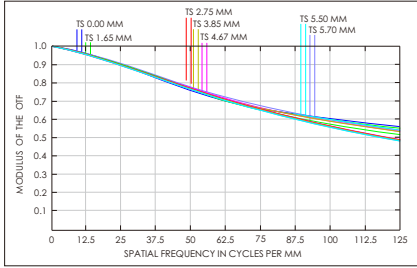


Lens position detection

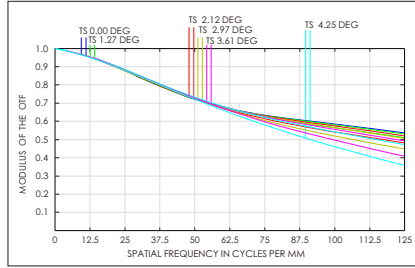


Copper foil welding inspection

MTF Drawings



OPT-C5025-5M-LW



OPT-C7528-5M-LW

Model Table

No.	Model	Focal length (mm)	Aperture range	WD (mm)	Filter thread	Distortion	Weight (kg)	FOV angle (across - horizontal - vertical)			
								Matching sensor format			
1	OPT-C5025-5M-LW	50	F2.5-F22	1000-∞	M30.5*P0.5	<0.1%	0.11	1/3"	6.9°	5.5°	4.1°
								1/2"	9.2°	7.3°	5.5°
								1/1.8"	10.3°	8.2°	6.2°
								2/3"	12.5°	10°	7.6°
2	OPT-C7528-5M-LW	75	F2.8-F32	5000-∞	M30.5*P0.5	<0.1%	0.2	1/3"	4.56°	3.65°	2.72°
								1/2"	6.1°	4.84°	3.62°
								1/2.5"	5.4°	4.35°	3.24°
								2/3"	8.34°	6.66°	5.0°

Dimensional Drawing [mm]

