

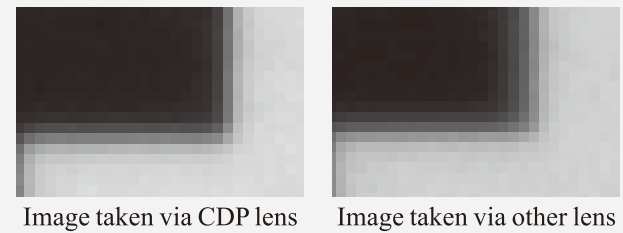
# Dolphin 20M Series Fixed Focal Length Lenses NEW



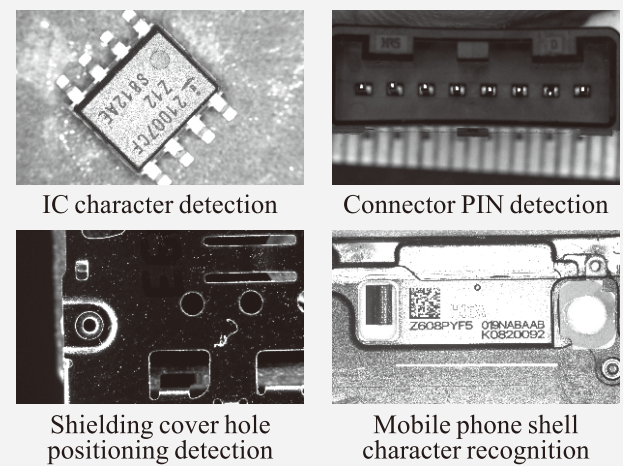
## Product Features

- **High resolution**  
 208 lp/mm resolution; suitable for cameras of  $\geq 2.4\mu\text{m}$  pixel size and  $\leq 1.1''$  ( $\varnothing 17.6\text{mm}$ ) sensor format.
  - **Wide spectrum range**  
 Compatible with VIS and NIR (400 - 1000nm).
  - **Low distortion**  
 TV distortion  $< 0.2\%$ <sup>[1]</sup>
  - **High Relative Illumination**  
 CRA Below  $5^\circ$ , this guarantees a high relative illumination across the entire image without vignetting.
- [1] The TV distortion of OPT-CDP1228  $< 0.85\%$ @WD300, OPT-CDP1628  $< 0.41\%$ @WD300.

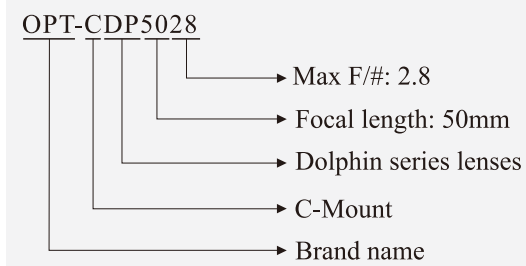
## Resolution Comparison



## Application Examples



## Selection Guide

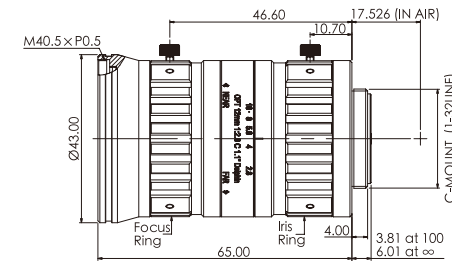


## Model Table

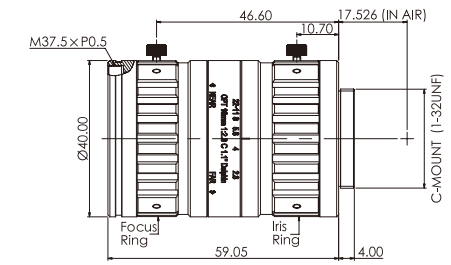
| No. | Model       | Focal length (mm) | Aperture | WD (mm)       | Image circle $\varnothing$ (mm) | Resolution ( $\mu\text{m}$ ) | TV Distortion at WD300 | Back Focal Length (mm)                 | Mag. at MOD     | Chief Ray Angle | Filter thread (mm) | Weight (kg) |
|-----|-------------|-------------------|----------|---------------|---------------------------------|------------------------------|------------------------|--|-----------------|-----------------|--------------------|-------------|
| 1   | OPT-CDP1228 | 12                | F2.8-16  | 100- $\infty$ | 17.6                            | 2.4                          | $< 0.85\%$             | 13.40 at WD100<br>11.79 at WD $\infty$ | 0.101X at WD100 | $< 3.8^\circ$   | M40.5*P0.5         | 0.21        |
| 2   | OPT-CDP1628 | 16                | F2.8-22  | 100- $\infty$ | 17.6                            | 2.4                          | $< 0.41\%$             | 19.98 at WD100<br>17.58 at WD $\infty$ | 0.131X at WD100 | $< 5.0^\circ$   | M37.5*P0.5         | 0.17        |
| 3   | OPT-CDP2528 | 25                | F2.8-16  | 150- $\infty$ | 17.6                            | 2.4                          | $< 0.16\%$             | 11.89                                  | 0.162X at WD150 | $< 5.0^\circ$   | M32.5*P0.5         | 0.14        |
| 4   | OPT-CDP3528 | 35                | F2.8-16  | 200- $\infty$ | 17.6                            | 2.4                          | $< 0.15\%$             | 13.44                                  | 0.176X at WD200 | $< 4.85^\circ$  | M32.5*P0.5         | 0.14        |
| 5   | OPT-CDP5028 | 50                | F2.8-16  | 250- $\infty$ | 17.6                            | 2.4                          | $< 0.13\%$             | 13.05                                  | 0.206X at WD250 | $< 3.64^\circ$  | M32.5*P0.5         | 0.17        |

## Dimensions (mm)

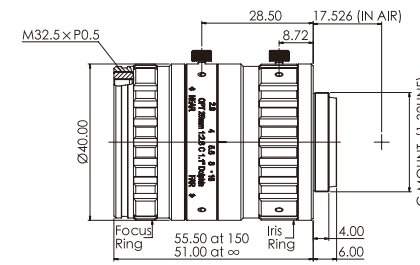
1.OPT-CDP1228



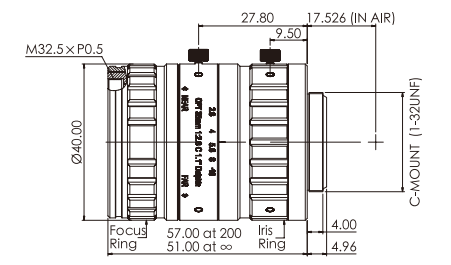
2.OPT-CDP1628



3.OPT-CDP2528



4.OPT-CDP3528



5.OPT-CDP5028

