

5MP Fixed Focal Length Lenses

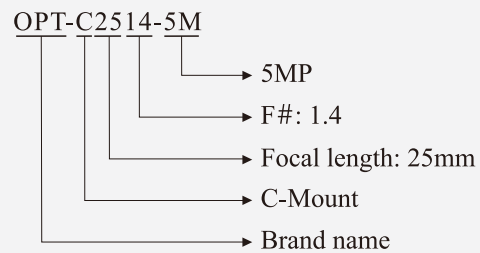


Product Features

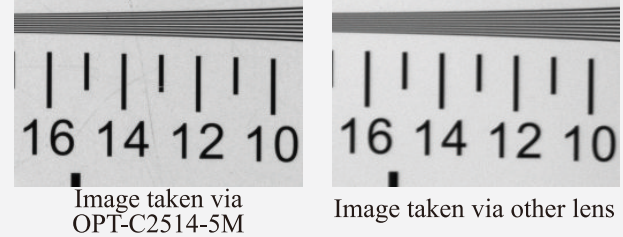
- High resolution**
 Compatible with 5MP industrial cameras^[1] of $\geq 3.45\mu\text{m}$ pixel size and max. 2/3" sensor; up to 140 lp/mm full FOV resolution
- Low distortion**
 Total distortion < 0.7%, min. distortion as low as 0.02%^[2]

[1] OPT-C0420-5M/OPT-C0620-5M: Compatible with 3MP cameras of max. 1/2" sensor
 [2] OPT-C0420-5M & OPT-C0620-5M are not included.

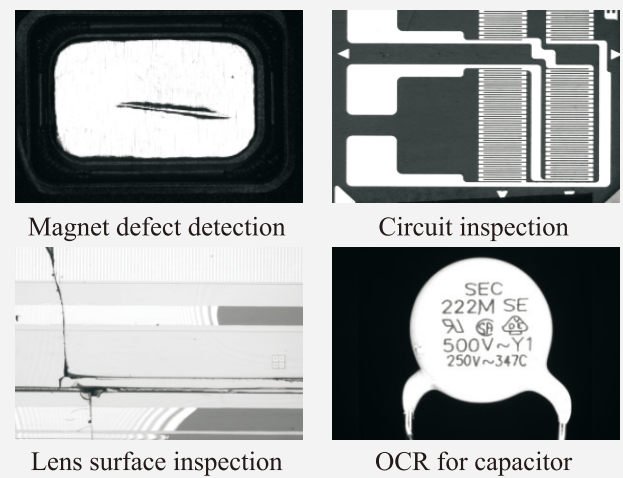
Selection Guide



Resolution Comparison



Application Examples



Model Table

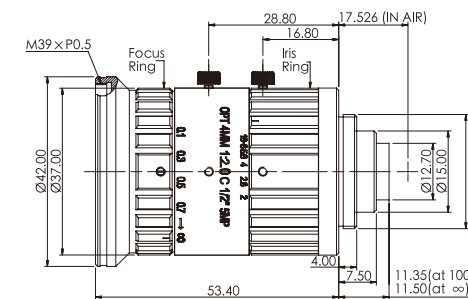
No.	Model	Focal length (mm)	Aperture range	WD (mm)	Filter thread (mm)	Distortion	Back focal length (mm)	Weight (kg)	Sensor format	FOV angle (H×V×D)			
1	OPT-C0420-5M	4	F2.0-F16	100-∞	M39*P0.5	<1.7%	6.46	0.13	1/3"	62.5°	48.6°	74.2°	
									1/2.5"	71.4°	56.0°	83.6°	
									1/2"	76.0°	60.8°	90.0°	
2	OPT-C0620-5M	6	F2.0-F16	80-∞	M30.5*P0.5	<1.05%	7.44	0.11	1/3"	43.8°	32.9°	53.0°	
									1/2.5"	51.2°	39.6°	61.8°	
									1/2"	56.8°	44.0°	68.2°	
3	OPT-C0828-5M	8	F2.8-F16	30-∞	M30.5*P0.5	<0.81%	13.06	0.12	1/3"	32.5°	25.4°	40.4°	
									1/2.5"	39.2°	29.8°	48.0°	
									1/1.8"	48.2°	37.3°	58.5°	

Model Table

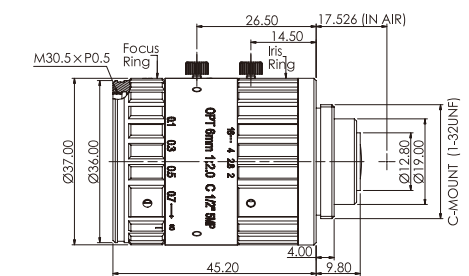
No.	Model	Focal length (mm)	Aperture range	WD (mm)	Filter thread (mm)	Distortion	Back focal length (mm)	Weight (kg)	Sensor format	FOV angle (H×V×D)			
4	OPT-C1218-5M	12	F1.8-F16	100-∞	M30.5*P0.5	<0.25%	13.39	0.13	1/3"	23.0°	17.3°	28.6°	
									1/2.5"	27.4°	20.7°	33.9°	
									1/1.8"	34.1°	25.8°	41.8°	
									2/3"	40.1°	33.9°	50.9°	
5	OPT-C1618-5M	16	F1.8-F16	150-∞	M30.5*P0.5	<0.2%	13.58	0.14	1/3"	18.0°	13.5°	22.4°	
									1/2.5"	21.2°	16.1°	26.4°	
									1/1.8"	26.7°	20.3°	33.1°	
									2/3"	31.4°	26.3°	40.2°	
6	OPT-C2514-5M	25	F1.4-F16	200-∞	M30.5*P0.5	<0.3%	11.54	0.08	1/3"	10.9°	8.3°	13.6°	
									1/2.5"	13.1°	9.9°	16.4°	
									1/1.8"	16.4°	12.4°	20.4°	
									2/3"	19.4°	16.2°	25.1°	
7	OPT-C3514-5M	35	F1.4-F16	390-∞	M30.5*P0.5	<0.1%	12.75	0.13	1/3"	7.7°	5.9°	9.7°	
									1/2.5"	9.3°	7.0°	11.6°	
									1/1.8"	11.6°	8.9°	14.5°	
									2/3"	13.7°	11.4°	17.8°	
8	OPT-C5025-5M	50	F2.5-F22	600-∞	M30.5*P0.5	<0.05%	13.19	0.11	1/3"	5.3°	3.9°	6.6°	
									1/2.5"	6.2°	4.6°	7.7°	
									1/1.8"	7.9°	5.9°	9.8°	
									2/3"	9.1°	7.7°	12.0°	
9	OPT-C7528-5M	75	F2.8-F32	600-∞	M30.5*P0.5	<0.02%	31.38	0.22	1/3"	3.4°	2.6°	4.3°	
									1/2.5"	4.0°	3.0°	5.0°	
									1/1.8"	5.1°	3.9°	6.4°	
									2/3"	6.0°	5.0°	7.8°	

Dimensions (mm)

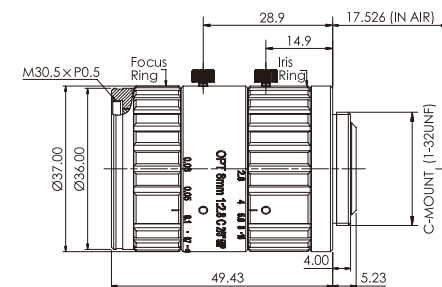
1.OPT-C0420-5M



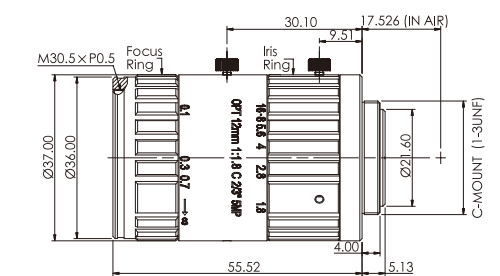
2.OPT-C0620-5M



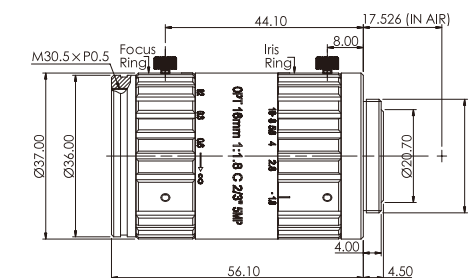
3.OPT-C0828-5M



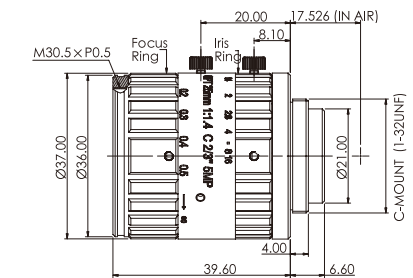
4.OPT-C1218-5M



5.OPT-C1618-5M



6.OPT-C2514-5M



Extension tube	Model	OPT-C2514-5M		OPT-C3514-5M		OPT-C5025-5M		OPT-C7528-5M	
		0.2m-∞		0.39m-∞		0.57m-∞		0.6m-∞	
30mm	WD(mm)	-	-	-	-	103	104	204	205
	1/3"	-	-	-	-	6.9×5.2	7×5.2	11×8.3	11.1×8.3
	1/2.5"	-	-	-	-	8.3×6.2	8.4×6.2	13.2×9.9	13.3×9.9
	1/1.8"	-	-	-	-	10.3×7.7	10.4×7.7	16.5×12.2	16.6×12.3
	2/3"	-	-	-	-	12.7×9.5	12.8×9.6	20.3×15.2	20.4×15.3
	Mag.	-	-	-	-	0.6907X	0.6847X	0.4332X	0.4302X
35mm	WD(mm)	-	-	-	-	-	94	186	187
	1/3"	-	-	-	-	-	6.1×4.5	9.9×7.4	9.9×7.4
	1/2.5"	-	-	-	-	-	7.3×5.4	11.9×8.8	11.9×8.9
	1/1.8"	-	-	-	-	-	9.1×6.7	14.8×11	14.9×11
	2/3"	-	-	-	-	-	11.2×8.4	18.2×13.6	18.3×13.7
	Mag.	-	-	-	-	-	0.7847X	0.4832X	0.4802X
40mm	WD(mm)	-	-	-	-	-	-	171	172
	1/3"	-	-	-	-	-	-	9×6.7	9×6.7
	1/2.5"	-	-	-	-	-	-	10.8×8	10.8×8
	1/1.8"	-	-	-	-	-	-	13.4×9.9	13.5×10
	2/3"	-	-	-	-	-	-	16.5×12.3	16.5×12.4
	Mag.	-	-	-	-	-	-	0.5332X	0.5302X
45mm	WD(mm)	-	-	-	-	-	-	159	160
	1/3"	-	-	-	-	-	-	8.2×6.1	8.2×6.2
	1/2.5"	-	-	-	-	-	-	9.8×7.3	9.9×7.3
	1/1.8"	-	-	-	-	-	-	12.3×9.1	12.3×9.1
	2/3"	-	-	-	-	-	-	15×11.3	15.1×11.3
	Mag.	-	-	-	-	-	-	0.5832X	0.5802X