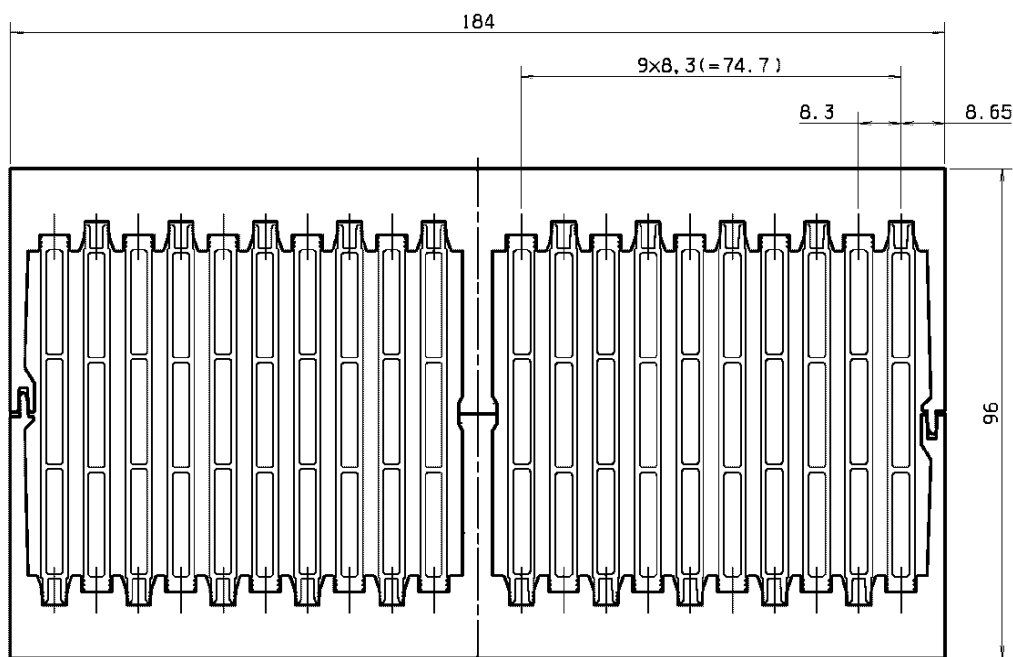


## Dual Basis Hollow Fin Heat Sink for Axial Fans



Length	Mass	Thermal Resistance <i>5m/s air flow</i>
50 mm	1.2 kg	0.10 K/W
60 mm	1.5 kg	0.090 K/W
70 mm	1.7 kg	0.081 K/W
80 mm	2.0 kg	0.075 K/W
90 mm	2.2 kg	0.070 K/W
100 mm	2.4 kg	0.066 K/W
110 mm	2.7 kg	0.063 K/W
120 mm	2.9 kg	0.060 K/W
130 mm	3.2 kg	0.058 K/W
140 mm	3.4 kg	0.056 K/W
150 mm	3.7 kg	0.054 K/W
160 mm	3.9 kg	0.052 K/W
170 mm	4.2 kg	0.051 K/W
180 mm	4.4 kg	0.050 K/W
190 mm	4.7 kg	0.049 K/W
200 mm	4.9 kg	0.048 K/W
210 mm	5.1 kg	0.047 K/W
220 mm	5.4 kg	0.046 K/W

Length	Mass	Thermal Resistance <i>5m/s air flow</i>
230 mm	5.6 kg	0.046 K/W
240 mm	5.9 kg	0.045 K/W
250 mm	6.1 kg	0.044 K/W
275 mm	6.7 kg	0.043 K/W
300 mm	7.3 kg	0.042 K/W
325 mm	8.0 kg	0.041 K/W
350 mm	8.6 kg	0.040 K/W
375 mm	9.2 kg	0.040 K/W
400 mm	9.8 kg	0.039 K/W
425 mm	10.4 kg	0.038 K/W
450 mm	11.0 kg	0.038 K/W
475 mm	11.6 kg	0.038 K/W
500 mm	12.2 kg	0.037 K/W
550 mm	13.5 kg	0.037 K/W
600 mm	14.7 kg	0.036 K/W
650 mm	15.9 kg	0.036 K/W
700 mm	17.1 kg	0.035 K/W
750 mm	18.4 kg	0.035 K/W

Number of fans required: 2

Suggested fan types: 3412NHH,3412NGHH

The values for the thermal resistance above are valid for full sized isothermal heating on both bases. Using small sized single spotted heat sources increases the thermal resistance depending on size, number and orientation of the heat sources.

Irrtümer und Änderungen vorbehalten!  
Errors and changes excluded!