

COMOSS Electronic Co., Ltd.

Address : 4F., No.11, Zhongxin St., Shulin Dist.,
New Taipei City 23875, Taiwan (R.O.C.)

TEL : +886 2 2688 2498

FAX : +886 2 26899160

E-mail : sales@comoss.com.tw

Website : www.comoss.com

COMOSS®

Machine
Vision

WWW.ELECTRONIC-LINKS.COM
fliburdi@electronic-links.com
+1.607.761.9952



COMOSS Website

Index

● Company Profile	02
● USB3.1 Type C Cable Assembly	04
● USB2.0 Cable Assembly	06
● USB3.0 Cable Assembly	08
● 1394B Cable Assembly	10
● Gigabit Ethernet Cable Assembly	12
● Camera Link Cable Assembly	14
● CoaXPress Cable Assembly	16
● Order Information	18
● High Flex Cable Test	25



Company Profile

Date Established : October, 1988

Head Quarter : Taiwan

Founder : Mr. Stanley

Sites :

Taiwan R&D center

China Factory

Philippine Factory

HK Office

Japan Office (COMSCIENCE)
www.comscience.jp

US Office (ELECTRONIC-LINKS)
www.electronic-links.com



- 1988 - COMOSS Taiwan
- 1995 - China factory - (connector, cable assembly and PCB assembly)
- 1998 - Hong-Kong office
- 1999 - Build Philippine factory (connector & cable assembly)
- 2006 -1394B cable and connector solution
- 2012
 - USB3.0 product line
 - 1394b coax extension long haul solution
- 2013 - Machine Vision cable series
- 2014 & 2015
 - Water Proof product
 - HDMI & DVI Long Haul Optical Cable
 - USB3.0 Active Cable
- 2016
 - USB3.1 Type C
 - CoaXPress

Membership :

1394TA

USB Association

AIA (ELECTRONIC-LINKS)

CMVU (COMOSS)

JIIA (COMSCIENCE)



USB3.1 Type C Cable Assembly



Features :

- 1 Designed for industrial application.
- 2 Product Series : Coaxial or Twisted Wire.
- 3 With or without E-Mark chip (optional).
- 4 Transmission rate up to 10Gbps.
- 5 Maximum current with 3A-5A.
- 6 Screw-lock mechanism (optional).
- 7 Signal well protection by double shielding.
- 8 RoHS / Reach / UL compliant.



USB2.0 Cable Assembly



Features :

- 1 Designed for industrial application.
- 2 Maximum data transfer rate up to 480Mbps.
- 3 Screw-lock mechanism (optional).
- 4 Signal well protection by double shielding.
- 5 Cable Option: Standard / High Flex (robotic grade).
- 6 Variety of plug angle orientation available.
- 7 RoHS / Reach / UL compliant.

USB3.0 Cable Assembly

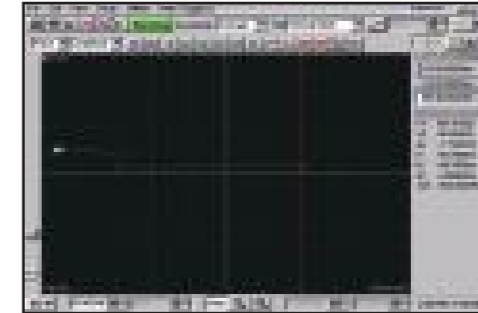


Impedance

TX :



RX :



Eye Diagram

TX :



RX :



Features :

- 1 Designed for industrial application.
- 2 Maximum data transfer rate up to 5Gbps.
- 3 Screw-lock mechanism (optional).
- 4 Signal well protection by double shielding.
- 5 Length : up to 20m (active cable).
- 6 Cable Option : Standard / Premier / High Flex (robotic grade).
- 7 Variety of plug angle orientation available.
- 8 RoHS / Reach / UL compliant.



1394B Cable Assembly



Features :

- 1 Suitable for industrial.
- 2 Screw-lock mechanism (optional).
- 3 Signal well protection by double shielding.
- 4 Length : up to 70m (active cable).
- 5 Cable Option: Standard / Premier / High Flex (robotic grade).
- 6 Variety of plug angle orientation available.
- 7 RoHS / Reach / UL compliant.

Gigabit Ethernet Cable Assembly



Features :

- 1 Suitable for industrial.
- 2 Overmolded strain relief.
- 3 Latch type or Screw-lock type.
- 4 Signal well protection by double shielding.
- 5 Length : up to 100m.
- 6 Cable Option : Standard / Premier / High Flex (robotic grade).
- 7 Variety of plug angle orientation available.
- 8 RoHS / Reach / UL compliant.

Camera Link Cable Assembly



Features :

- 1 Suitable for industrial.
- 2 Overmolded strain relief.
- 3 Thumbscrew mechanism type.
- 4 Signal well protection by double shielding.
- 5 Length: up to 10m.
- 6 PoCL supported.
- 7 RoHS / Reach / UL compliant.

CoaXPress Cable Assembly

Features :

- 1 Design for industrial camera application.
- 2 Data rates up to 6.25Gbps and the maximum 25Gbps (4 simultaneously).
- 3 Transmission of video, control signals and power supply simultaneously.
- 4 Precision 75ohm impedance.
- 5 Cable Option : Single Coaxial conductor- RG59 / RG179 / RG6.



Product Series

Product	Standard	Premium	High Flex	Long Haul
USB Type C	✓			
USB2.0	✓		✓	
USB3.0	✓	✓	✓	✓
1394b	✓		✓	✓
GIGE	✓	✓	✓	✓
CAMERA LINK		✓		
CoaXPress	✓			

Order Information

USB 3.0 / 3.1 Cable Assembly :

USB3 Standard Cable :

USB3C - A / 1 - CS / 1 - (X)M - X
 (1) (2) (3) (4) (5) (6)

USB3 Active Cable:

USB3AC - A / 1 - CS / 1 - (X)M - X
 (1) (2) (3) (4) (5) (6)

USB3.1 Cable:

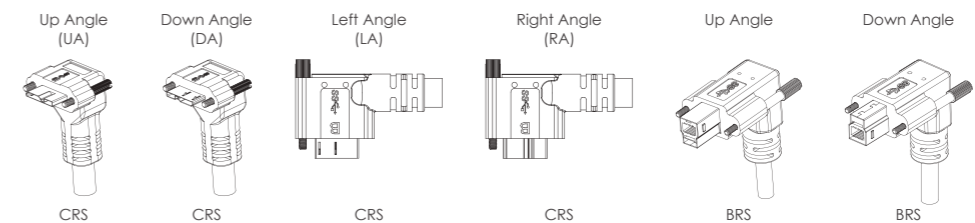
USB3.1C - A / 1 - CS / 1 - (X)M - X
 (1) (2) (3) (4) (5) (6)

- (1) (3) Contact Type**

- A : STD A Plug USB3.0
- AF : STD A Female USB3.0
- B : STD B Plug USB3.0
- BF : STD B Female USB3.0
- C : Micro USB B Type USB3.0
- AS : STD A Plug USB3.0 With Screw
- BS : STD B Plug USB 3.0 With Screw
- BRS : Angled STD B Plug USB 3.0 With Screw
- CS : STD Micro USB B Plug USB 3.0 With Screw
- CRS: Angled STD Micro USB B Plug USB 3.0 With Screw
- TC : Type C Plug

- (2) (4) Overmold Type**

- 1 = Straight
- U A = Up Angle
- DA = Down Angle
- L A = Left Angle
- RA = Right Angle



- (5) Cable Length : by meter**

- (6) Cable Type Options :**

- STD : Standard
- PMR : Premier
- HF= OKI High Flex

Gigabit Ethernet Cable Assembly :

GigE - 8P8CS / 1 - 8P8CS / 1 - (X)M - X
 (1) (2) (3) (4) (5) (6)

- **(1) (3) Contact Type**

8P8C : 8P8C Plug with shell

8P8CS : Horizontal 8P8C Plug with Screw

8P8CRS : Angled 8P8C Plug with Screw

8P8CVS : Vertical 8P8C Plug with Screw

- **(2) (4) Overmold Type**

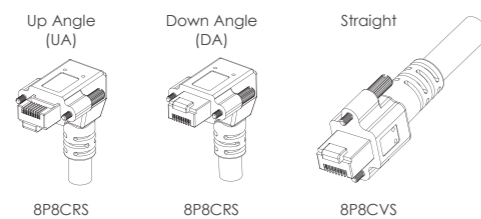
1 = Straight

UA = Up Angle

DA = Down Angle

LA = Left Angle

RA = Right Angle



- **(5) Cable Length :** by meter

- **(6) Cable Type Options :**

STD : Standard

PMR : Premier

HF : High Flex

1394B Cable Assembly :

1394C - 9ARS - 9ARS - (X)M - X
 (1) (2) (3) (4)

- **(1) (2) Interface Type :**

6P : 6 pin plug

4P : 4 pin plug

6F : 6 pin socket

4F : 4 pin socket

9A : 9 pin beta plug

9AF : 9 pin beta socket

9B : 9 pin bilingual plug

9BF : 9 pin bilingual socket

9AS : 9 pin beta plug screw type

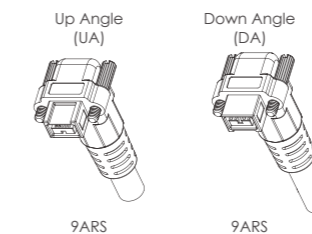
9BS : 9 pin bilingual plug screw type

9ARS/UA : 9 pin beta plug up angle screw type

9ARS/DA : 9 pin beta plug down angle screw type

9BRS/UA : 9 pin bilingual plug up angle screw type

9BRS/DA : 9 pin bilingual plug down angle screw type



- **(3) Cable Length :** by meter

- **(4) Cable Type Options :**

STD : Standard

HF : High Flex

Camera Link Cable Assembly:

CMLK - M - S - (X)M - X
 (1) (2) (3) (4)

- **(1) (2) Contact Type :**
 M : MDR Male
 S : SDR/HDR Male
 S14 : 14pin SDR for PoCL Lite Male
- **(3) Cable Length :** by meter
- **(4) Cable Type :**
 PMR: Premier

USB 2.0 Cable Assembly :

USBC - A / 1 - B / 1 - (X)M - X
 (1) (2) (3) (4) (5) (6)

- **(1) (3) Contact Type**
 A: STD A Plug
 AF: STD A Socket
 B: STD B Plug
 BF: STD B Socket
 BS: STD B Plug with Screw
 MiA: Mini A Plug
 MiAF: Mini A Socket
 MiB: Mini B Plug
 MiBS: Mini B Plug With Screw
 MiBF: Mini B Socket
 MiBFS: Mini B Socket With Screw
 MicB: Micro USB Plug
- **(2) (4) Overmold Type**
 1 = Straight
 UA = Up Angle
 DA = Down Angle
 LA = Left Angle
 RA = Right Angle
- **(5) Cable Length :** by meter
- **(6) Cable Type Options**
 STD: Standard
 PMR: Premier
 HF: High Flex

High Flex Cable Test

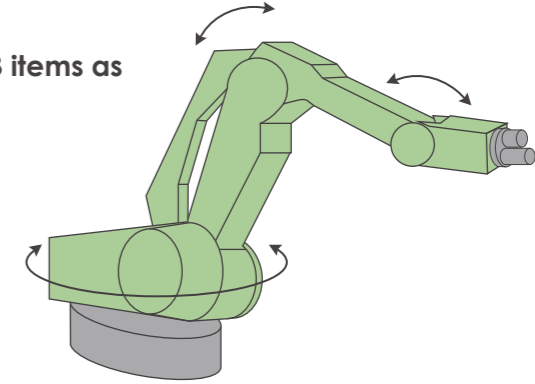
CoaXPress Cable Assembly :

CXP - X / 1 - X / 1 - (X)M
 (1) (2) (3) (4) (5)

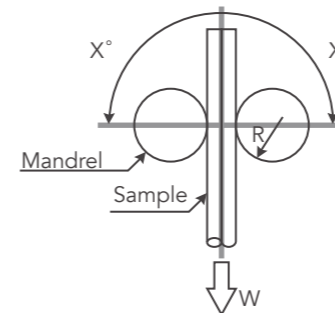
- **(1) (3) Contact Type :**
 B: BNC
 D: DIN 1.0/2.3
- **(2) (4) Overmold Type :**
 1 = Straight
- **(5) Cable Length :** by meter

Oki Electric Cable present following 3 items as main moving method :

1. Bending
2. Sliding
3. Twisting

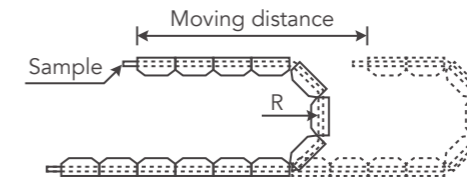


Flex cable for bending :



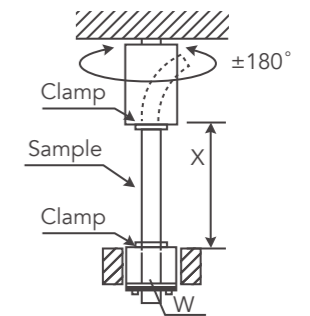
Bending Test Equipment	Bending R	10mm
		12.7mm
		20mm
		30mm
		50mm
	Bending Angle	+/-90degrees
		+/-120degrees
	+/-180degrees	
Bending Speed	60times/min. (MAX)	
Bending Count	One back and forth	

Flex cable for sliding :



Sliding Test Equipment	Outer Diameter	30φ or less	9φ or less
	Moving Distance	1.5m	350mm
	Moving Speed	15times/Min. (MAX)	70times/Min. (MAX)
	Bending R	63mm	20mm to 60mm
		100mm	60mm
		125mm	(5mm pitch)
		200mm	
Count	One back and forth		

Flex cable for twisting :



Twisting Test Equipment	Twisted Angle	+/-180degrees (Fixed)
	Span X	300mm, 500mm
	Twisted Speed	15times/Min. (Fixed)
	Count	One back and forth